



S0011 Installation Advice for Truck Mount Cranes 180, 250, 300, 330

S0011	Version 2	Structural	17-08-04
-------	-----------	------------	----------

When operating a Steelbro Crane Set, the stability of the crane is primarily governed by three factors:

1. Load position
2. Stabiliser foot position
3. Effective tare weight of the truck combination.

These can each be affected by other factors, i.e. the deck height limits how far out the stabiliser foot can reach when placed on the ground; the suspension lash effects the contribution of un-sprung mass to the effective tare.

When the cranes are not fitted with offside stabiliser legs, positioning the load past the centre of the deck in the offside direction can lead to instability.

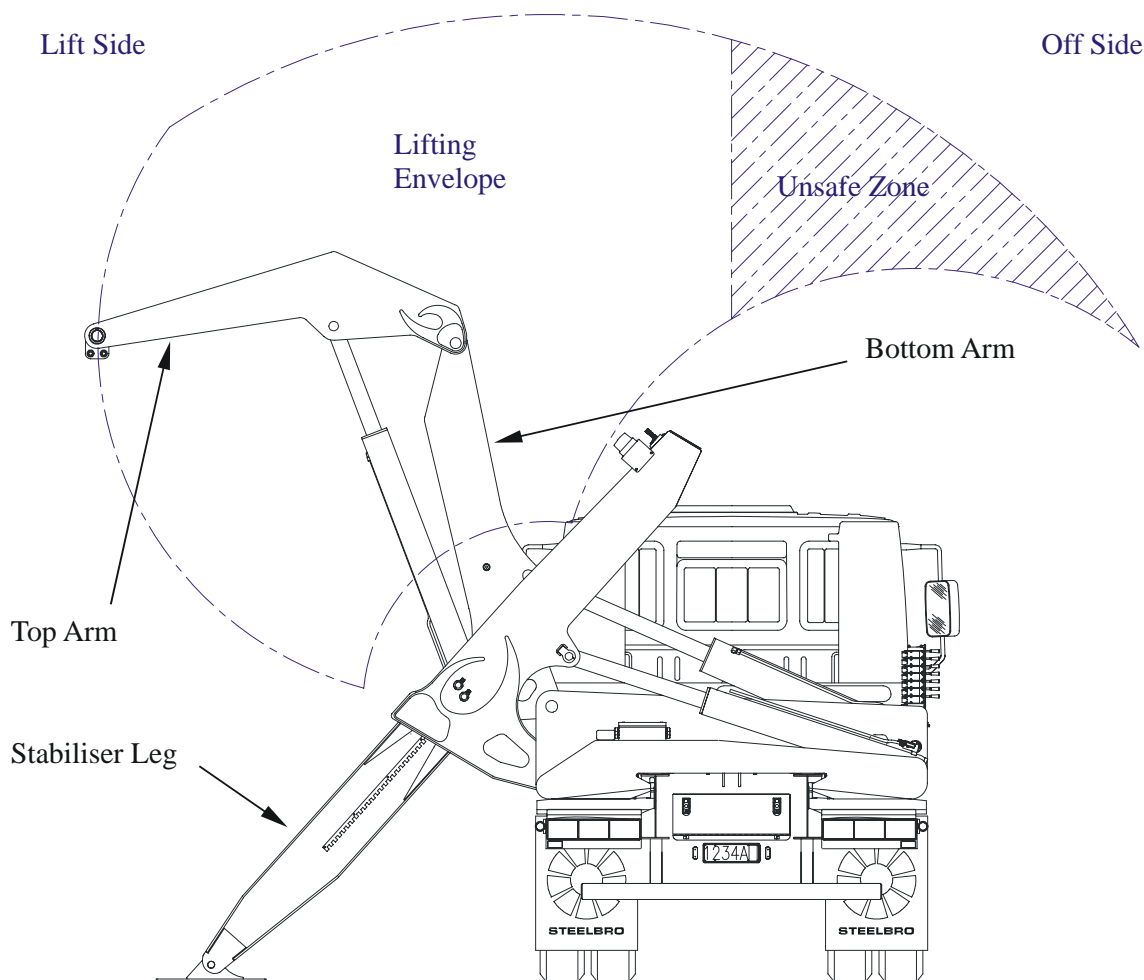


Figure 1 Truck Mounted Sidelifter



CRANE BASE SUPPORT LOADS

There are two extreme load conditions subject to the crane supports.

1. When the load is lifted to maximum height directly above the deck. This produces the greatest amount of out-of-plane moment on the arms, causing the cranes to roll towards each other. The weight of the payload and the cranes is also fully bearing on the supports at this point. The load on the stabiliser leg is negligible. The mounting chassis/frame is required to be stiff enough to prevent these deflecting too far, causing the lifting pins or chains to contact the upper edges of the container.

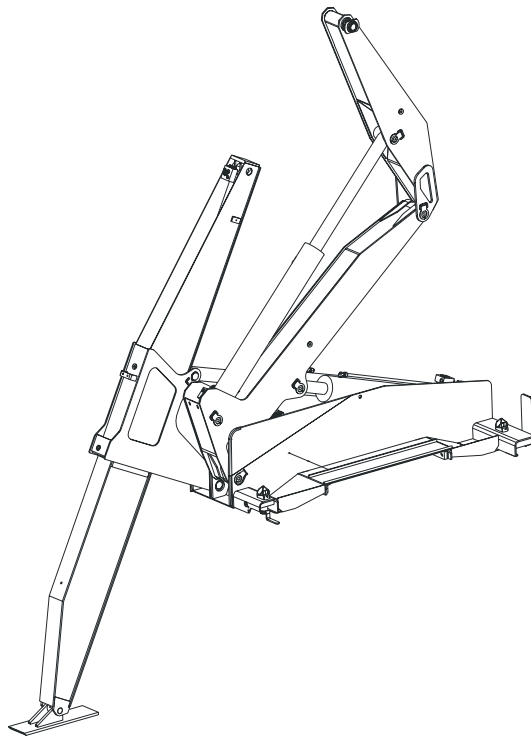


Figure 2 Sidelifter at max. height over deck

2. When the arms are at maximum reach. This makes the sum of all the support loads become vertically upward as the truck weight helps counterbalance the payload. The out-of-plane moment at the supports is greater as the stabiliser leg pushes the base upward and the load on the arms pushes down, causing the cranes to roll towards each other even more than condition 1.

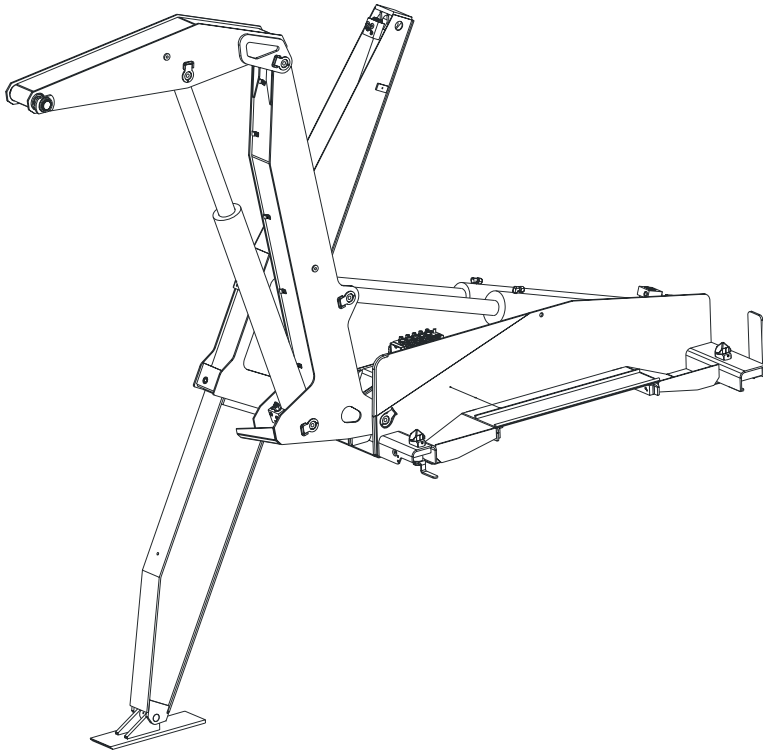
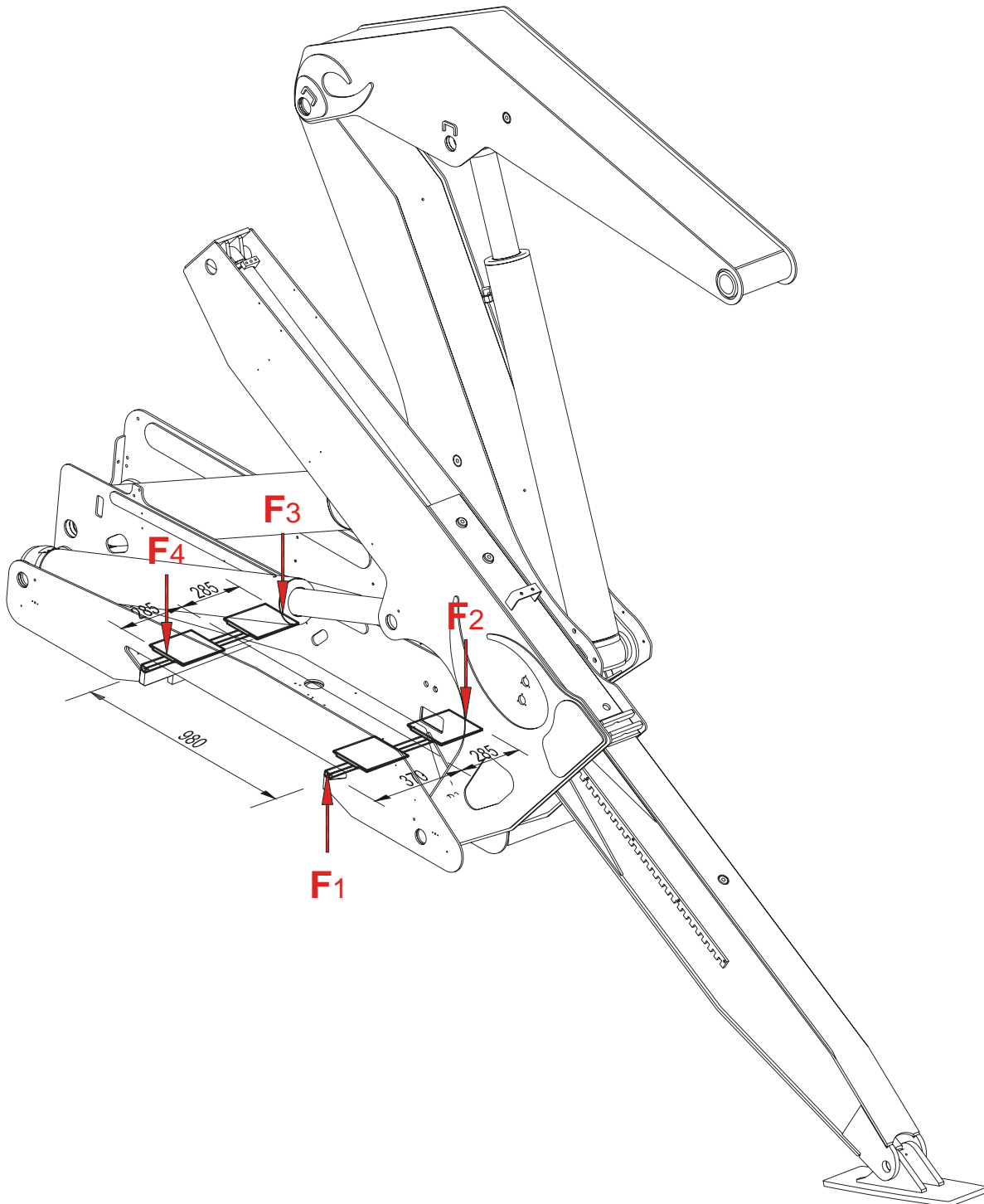


Figure 3 Sidelifter at max. reach



Model		SB180		SB250		SB300		SB330	
	Condition	1	2	1	2	1	2	1	2
Force	F1	65 kN	172 kN	91 kN	239 kN	109 kN	287 kN	120 kN	316 kN
	F2	115 kN	106 kN	159 kN	148 kN	191 kN	177 kN	210 kN	195 kN
	F3	16 kN	27 kN	23 kN	38 kN	27 kN	45 kN	30 kN	50 kN
	F4	16 kN	27 kN	23 kN	38 kN	27 kN	45 kN	30 kN	50 kN



Truck Chassis Stiffness

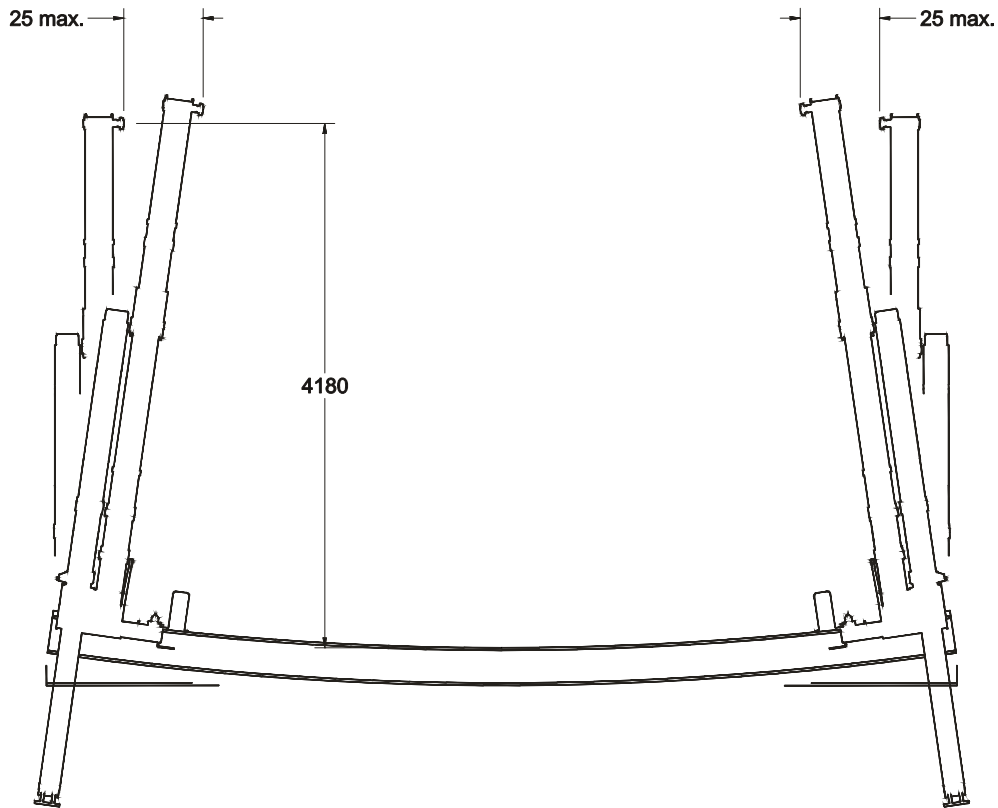


Figure 5 Maximum allowable deflections due to operating load

The design of the support frame or chassis is required to be stiff enough to prevent excessive deflection at the lifting pin (G Pin) on the crane. As long as the deflection at each crane due to the loads specified above, does not exceed 25mm at a height of 4180 above the support flange, then the correct operation of these units will be ensured.

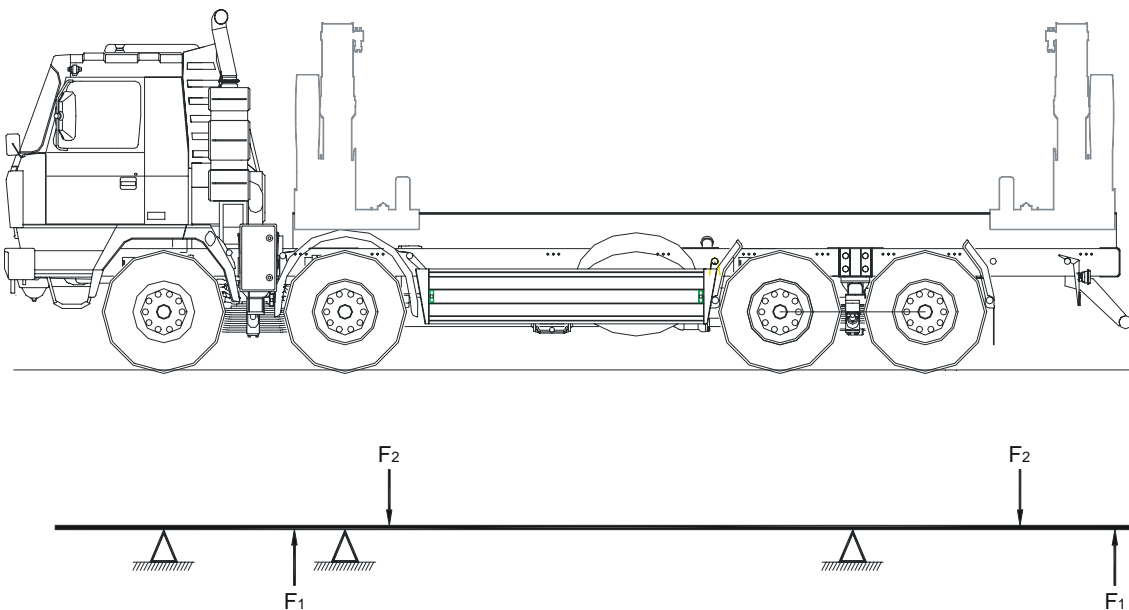


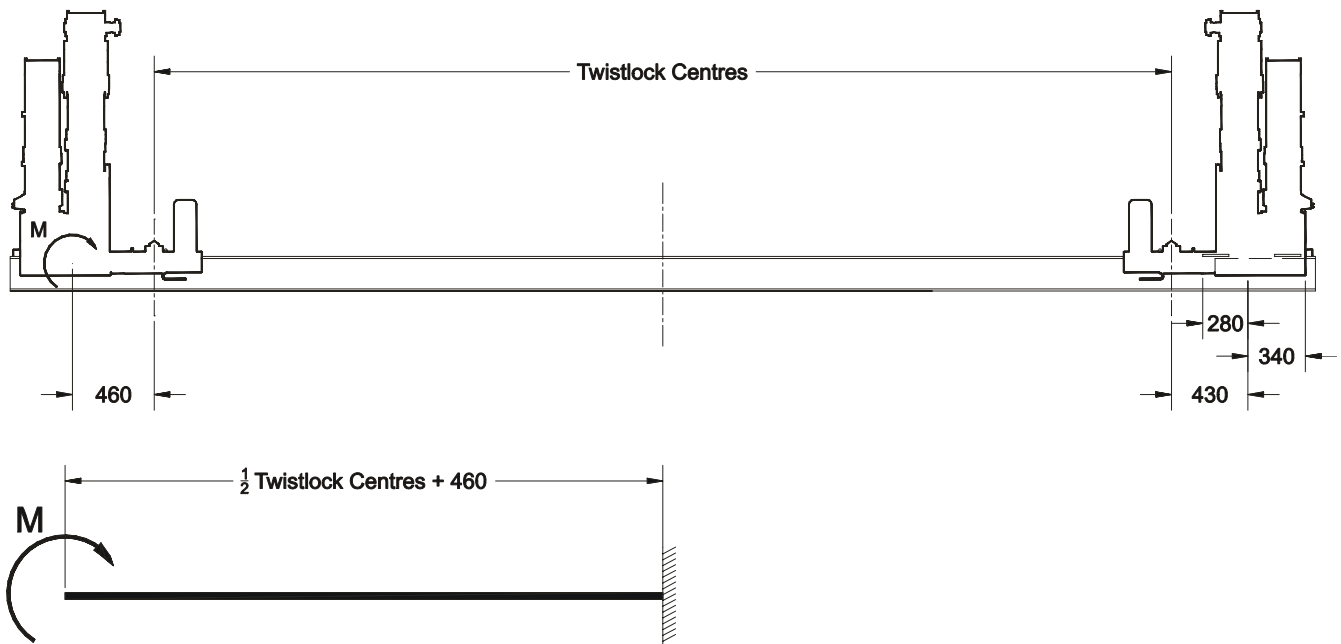
Figure 6 Free body diagram for typical truck chassis



The load distribution for a typical truck mount is as shown below:

The majority of truck manufacturers recommend that the sub-frame be attached to the chassis in such a way that the original bending and torsional characteristics of the vehicle are retained. This does create some conflict with the requirement for the two cranes to maintain alignment and minimise rolling of the chassis during the lifting process.

As the exact arrangement of supports will vary from installation to installation the following calculation has been carried out with assumptions i.e. consider the loads to be taken solely by one beam. The most critical aspect identified for proper crane operation is the amount of deflection allowed by the support frame/chassis. The following diagram considers only the opposing moment couples generated by the rolling of the cranes towards each other. From these we can determine the minimum chassis strength required to resist deflection if not taking axle supports into account.



Considering only one beam on the lift side of the truck to be resisting the moment couple, this will give a conservative stiffness requirement.



Static Load Case for SB180, SB250, SB300 & SB330 Truckmounts

Geometry:

$$\text{dist} := 5853 \text{ mm}$$

Twistlock Centres

$$F1 := \begin{pmatrix} 316 \\ 287 \\ 239 \\ 172 \end{pmatrix} \text{ kN}$$

Load Transfer Foot Outside Load

$$F2 := - \begin{pmatrix} 195 \\ 177 \\ 148 \\ 106 \end{pmatrix} \text{ kN}$$

Wear Pad Inside Load

$$\text{cen} := 310 \text{ mm}$$

Moment Couple Centre

$$M := F2 \cdot (\text{cen})$$

Moment Couple

$$L := \text{dist} + 920 \text{ mm}$$

Distance Between Moment Centres



$$l := \frac{L}{2}$$

Effective Beam Length

Bending Moments due to Couple:

$$ax := 0\text{mm} \quad bx := 340\text{mm} \quad cx := bx + L \quad dx := cx + 340\text{mm} \quad i := 0..3$$

$$BM(x) := M \cdot \frac{s(x, bx)}{s(x, bx)} - M \cdot \frac{s(x, cx)}{s(x, cx)}$$

$$axx := ax - 1\text{mm} \quad dxx := dx + 1\text{mm}$$

Bending Moment Diagram (1 beam only):



Minimum allowable Area Moment Of Inertia for Chassis

$$M = \begin{pmatrix} -60 \\ -55 \\ -46 \\ -33 \end{pmatrix} \text{ kNm}$$

$$E := 21010^9 \text{ Pa}$$

$$\delta_{\text{allow}} := 25\text{mm}$$

$$H := 4.18\text{m}$$

$$I_{\text{min}} := \frac{l \cdot |M_i|}{2E \cdot \tan\left(\frac{\delta_{\text{allow}}}{H}\right)} \quad I_{\text{min}} = \begin{pmatrix} 81.5 \\ 73.97 \\ 61.85 \\ 44.3 \end{pmatrix} 10^{-6} \cdot \text{m}^4$$

Model	SB180	SB250	SB300	SB330
I (m4)	44.3 x 10 - 6	61.9 x 10 - 6	74.0 x 10 - 6	81.5 x 10 - 6

Table 2 Recommended Minimum Area Moment of Inertia Values for 20 Foot Supporting Chassis

Installation Details

Model	
SB180	2000 kg
SB250	2100 kg
SB300	2300 kg
SB330	2500 kg

Table 3 Approximate Sidelifter Tare Weights
(per crane only – no fittings/subframe included)

To ensure correct operation of the cranes, it is important that the support frame is parallel to the ground when installed on the vehicle. Recommended double stacking twistlock height 1350mm.

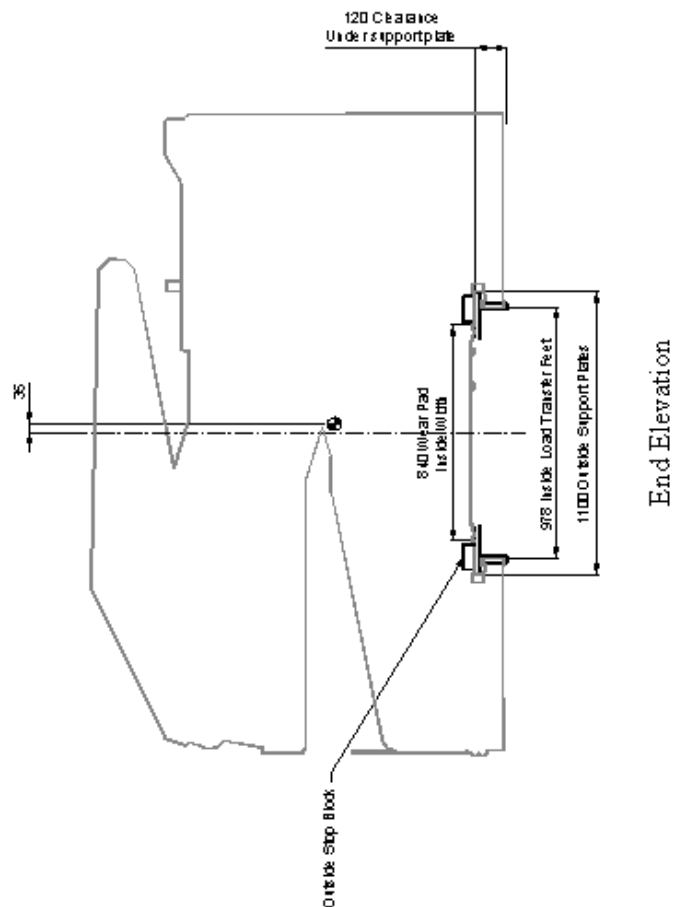
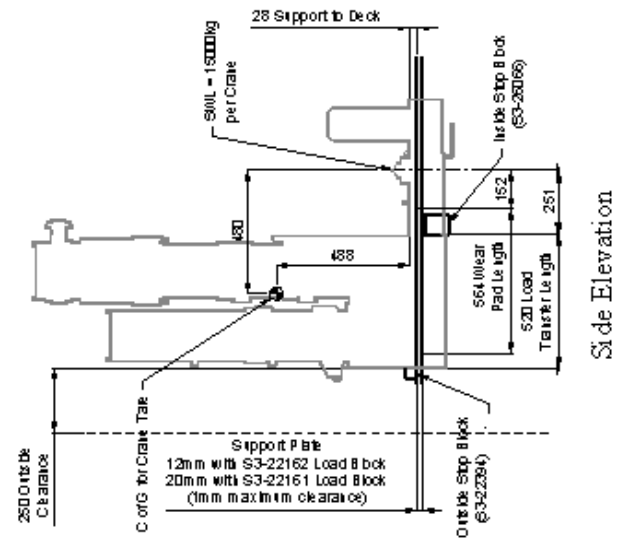
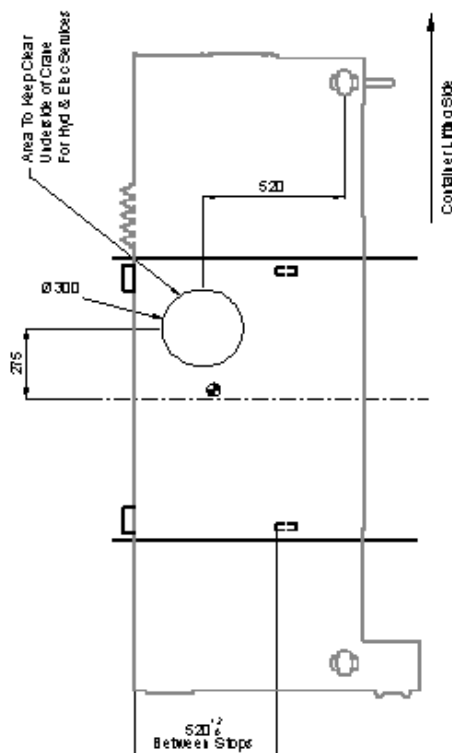


Figure 8. Sidelifter Mounting Details